

踏進昆士蘭最美國度 | 聖靈群島 The Whitsundays

Queensland
AUSTRALIA
澳洲 昆士蘭

4夜[出發日期: 即日起至2025年3月31日] | 4 Nights [Travel Period till to 31Mar2025]

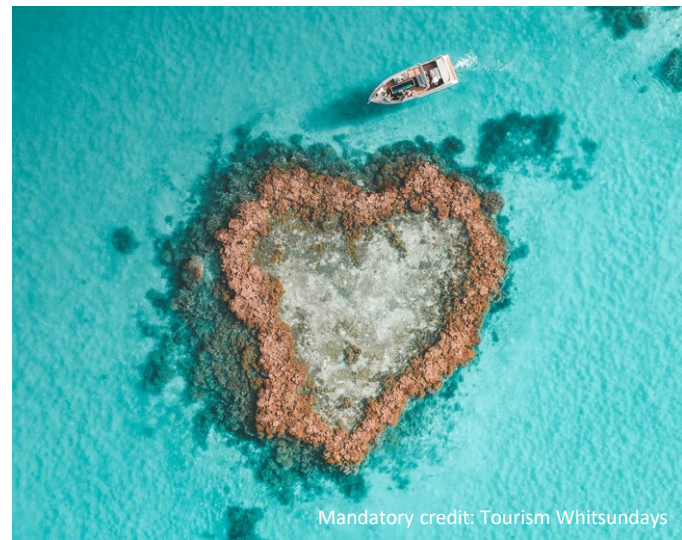


Mandatory credit: Tourism Whitsundays

✓ 國泰航空來回經濟客位機票
Round trip economy class air ticket on CX

✓ 來回布里斯本與聖靈群島內陸機票
Round trip domestic air ticket between Brisbane and Whitsundays

✓ 4晚酒店住宿
4 nights Luxury Lodge accommodation



Mandatory credit: Tourism Whitsundays

聖靈群島 (Whitsunday)由74個熱帶島嶼組成，距離昆士蘭 (Queensland)海岸55公里，位處大堡礁 (Great Barrier Reef)附近。

漢密爾頓島 (Hamilton Island)是聖靈群島中的一個島嶼，客人可以前往附近著名的潛水點浮潛或潛水，如踏腳石 (Stepping Stones)、瀉湖天堂 (Paradise Lagoon) 和魔鬼魚集中地 (Manta Ray Drop Off)。另一種選擇是乘直升機或水上飛機，在珊瑚礁和原始的白色天堂沙灘 (Whitehaven Beach)的上空飛翔，是觀賞著名的心形礁 (Heart Reef)的好方法，珊瑚礁帶有自然形成的的心形，必定讓您驚嘆。旅客還可以乘坐雙體船，觀賞大堡礁壯觀的珊瑚礁、數百種魚類、海龜和魔鬼魚。

CATHAY PACIFIC

1人成行 GV1

有關套票的條款及細則請參閱最後一頁

Page 1 of 4

Tour Code : CXBNELUX02

Ref No. : 40837

WAL/21Dec23/3950

WESTMINSTER
Travel Ltd.

西敏旅行社



For reservation & enquiry, please contact hotline 訂購及查詢，歡迎聯絡顧客服務熱線

☎ 9138 5030

☎ 2313 9800

✉ itravel@hkwtl.com

🌐 westminstertravel.com

Licence No. 350488

踏進昆士蘭最美國度 | 聖靈群島 The Whitsundays

Queensland
AUSTRALIA
澳洲 昆士蘭

4夜[出發日期: 即日起至2025年3月31日] | 4 Nights [Travel Period till to 31Mar2025]



✓ 國泰航空來回經濟客位機票
Round trip economy class air
ticket on CX

✓ 來回布里斯本與聖靈群島內陸機票
Round trip domestic air ticket
between Brisbane and Whitsundays

✓ 4晚酒店住宿
4 nights Luxury
Lodge accommodation

qualia
GREAT BARRIER REEF

入住4晚漢密爾頓島誇利亞酒店

qualia® Hamilton Island, Great Barrier Reef

www.qualia.com.au [僅限年滿16歲以上的客人入住]

※套票以淡季價格計算，於旺季、週末及假期前夕或大型節日期間出發，需另付附加費，詳情向本社職員查詢作準

Leeward Pavilions

- Room Size: 970ft² Bed Type: King Bed
- Daily a la carte breakfast at the Long Pavilion
 - VIP return Hamilton Island Airport
 - Use of electric golf buggy during the stay (drivers licence required)
 - 24-hour chauffeur service around Hamilton Island

HK\$ **21,900** ⁺(每位/成人佔半房)



Windward Pavilions

- Room Size: 1290ft² Bed Type: King/Twin Beds
- Private infinity-edge plunge pool
 - Daily a la carte breakfast at the Long Pavilion
 - VIP return Hamilton Island Airport
 - Use of electric golf buggy during the stay (drivers licence required)
 - 24-hour chauffeur service around Hamilton Island

HK\$ **30,900** ⁺(每位/成人佔半房)



CATHAY PACIFIC

1人成行 GV1

有關套票的條款及細則請參閱最後一頁

Page 2 of 4

Tour Code : CXBNELUX02 Ref No. : 40837 WAL/21Dec23/3950

WESTMINSTER
Travel Ltd.
西敏旅行社

For reservation & enquiry, please contact hotline 訂購及查詢，歡迎聯絡顧客服務熱線

☎ 9138 5030

☎ 2313 9800

✉ itravel@hkwtl.com

🌐 westminstertravel.com

Licence No. 350488



Iconic Luxury Escape Packages:

Qualia Classic (Included in Package)

- A la carte breakfast daily at the Long Pavilion restaurant, qualia
- All non-alcoholic beverages at qualia - including soft drinks, juices, waters, tea and coffee (does not include blended beverages)
- Use of an electric golf buggy for duration of stay (drivers licence required)
- 24-hour chauffeur service around Hamilton Island
- VIP return Hamilton Island airport/marina transfers
- Use of non-motorised watercraft
- Use of the qualia gym, spa, sauna and access to tennis court hire
- Complimentary WiFi
- Eligible for Velocity Points when qualia accommodation booked direct (conditions apply)

Upgrade to qualia Gourmet HK\$1,000 per head

- A la carte breakfast daily at the Long Pavilion restaurant, qualia
- A la carte dinner daily at the Long Pavilion restaurant, qualia
- All non-alcoholic beverages at qualia - including soft drinks, juices, waters, tea and coffee (does not include blended beverages)
- Use of an electric golf buggy for duration of stay (drivers licence required)
- 24-hour chauffeur service around Hamilton Island
- VIP return Hamilton Island airport/marina transfers
- Use of non-motorised watercraft
- Use of the qualia gym, spa, sauna and access to tennis court hire
- Complimentary WiFi
- Eligible for Velocity Points when qualia accommodation booked direct (conditions apply)



1人成行 GV1

有關套票的條款及細則請參閱最後一頁

Page 3 of 4

Tour Code : CXBNELUX02

Ref No. : 40837

WAL/21Dec23/3950

WESTMINSTER
Travel Ltd.

西敏旅行社



For reservation & enquiry, please contact hotline 訂購及查詢, 歡迎聯絡顧客服務熱線

9138 5030

2313 9800

itravel@hkwtl.com

westminstertravel.com

Licence No. 350488

踏進昆士蘭最美國度 | 聖靈群島 The Whitsundays

Queensland
AUSTRALIA
澳洲 昆士蘭

4夜[出發日期: 即日起至2025年3月31日] | 4 Nights [Travel Period till to 31Mar2025]



國泰航空 布里斯本機票附加費表

CX Brisbane Airfare Surcharge

出發日期: 即日起至2025年3月31日

Travel Period: till to 31Mar2025

1人成行 GV1			
Departure	Adult	Booking class	Ticket validity
		International	
Till to 31Mar25 (except blackout dates)	---	N	Max. 3 months
	\$1300	S	
	\$2400	V	

Domestic fare are subject to change, please refer to GDS fare for detail

Price Includes:

- Round trip economy class air ticket between Hong Kong and Brisbane on CX
- Round trip domestic air ticket between Brisbane and Whitsundays
- 4 nights hotel accommodation
- HK\$100,000 Travel Insurance [Zurich Insurance (Hong Kong) 24-hour emergency hotline+852-2886-3977]
- & 0.15% TIC Levy

Terms & Conditions:

- Package price is per person (in HK\$) and valid until **31Mar2025**; and hotel stay must be completed by 31Mar25
- Booking class: N Ticket validity: Max.3 months
- International flights valid on CX only
- Twin room is based on 2 single beds or 1 double bed
- Airport tax, HK security charge & fuel surcharge(if any) are not included
- A non-refundable deposit of HK\$1000 per person required upon reservation
- Full payment must be made after confirmation with no refund
- Upon confirmation, any amendment is subject to company's discretion
- All prices and conditions are subject to change without prior notice
- Check whether the Security Bureau has issued any [Outbound Travel Alert](#) for your destination before firming up your travel plan to ensure personal safety
- A service fee of HK\$30 will be collected for each ticket issued

費用包括:

- 國泰航空來回香港與布里斯本經濟客位機票
- 來回布里斯本與聖靈群島內陸機票
- 4晚酒店住宿
- HK\$100,000旅遊保險(蘇黎世保險(香港) 24小時緊急支援服務+852-2886-3977)
- 0.15% 旅遊業賠償基金

條款及細則:

- 以上套票價錢以每成人計算, 有效日期至2025年3月31日為止;
- 酒店入住必須於2025年3月31日或之前完成
- 訂位代號: N 機票有效期: 最長3個月
- 國際航班只適用於CX航班
- 雙人房之房種為2張單人床或1張雙人床
- 費用包括費用並未包括兩地機場稅, 香港機場保安稅及燃油附加費(如適用)
- 訂位時須繳交訂金港幣每位\$1000
- 餘款需於機票及酒店確認後繳付及恕不退還
- 於機票及酒店確認後, 如需更改本公司擁有最終決定權
- 所有費用如有更改, 恕不另行通知
- 為確保自身安全, 旅客在落實行程前, 應留意保安局有沒有對目的地發出 [外遊警告](#)
- 每發出機票乙張, 收取港幣\$30服務費



1人成行 GV1

Page 4 of 4

Tour Code: CXBNELUX02 Ref No.: 40837 WAL/21Dec23/3950

WESTMINSTER
Travel Ltd.

西敏旅行社



For reservation & enquiry, please contact hotline 訂購及查詢, 歡迎聯絡顧客服務熱線

9138 5030

2313 9800

itravel@hkwtl.com

westminstertravel.com

Licence No. 350488